



BACKUP LINE WIPOS R20.

The use of redundancy modules avoids standstill times, thereby increasing system availability. Our wipos R20 redundancy module monitors the feeding mains devices in a parallel circuit. If one device fails, the other device automatically takes over the supply.



- + 2 inputs/1 output
- + Full performance up to 60 °C
- + One signal contact per input
- + One LED per input
- + Ensures safe parallel connection
- + Increases system availability



PERFORMANCE FEATURES

- + Input voltage 21 - 28 V DC
- + Input current max. 20 A
- + Output voltage 24 V DC
- + Output current max. 20 A
- + Temperature range -25 °C...+71 °C





Description	wipos R20
Art. No.	81.000.6200.0

Output	
Output voltage DC	24 V
Output current	20 A

Input	
Input voltage DC min.	21 V
Input voltage DC operating	28 V
Input current	20 A

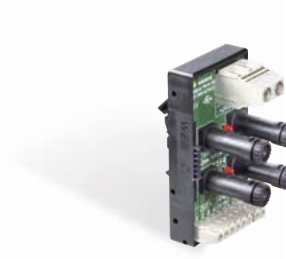
Technical features	
Number of inputs	2
Rated input current	20 A
Output voltage drop	0.5 V
Turnover voltage	30 V
Input A OK / Input B OK	20 V (±5 %) < U(i) < 30 V (±5 %) (LED green)
MTBF	659,000 h

Dimensions	
Depth	114 mm
Width	54 mm
Height	90 mm
Weight	210 g

Installation	
Installation distance horizontal	25 mm
Installation distance vertical	25 mm

TECHNICAL DATA	
Connection type	Screw connection
Rail mounting possible	Yes
Operating temperature min.-max.	-25 °C...+71 °C
Relative humidity min.-max.	20 - 95 %
Storage temperature / transport min.-max.	-25 °C...+85 °C
Protection class	IP20
Certificates / Approvals	CE, cULus

Fuse module



Description	Model	Art. No.	PU
Fuse module	wipos FM 4-10	81.000.6210.0	1

Output

Output voltage DC	24 V
-------------------	------

Input

Input voltage DC min.	18 V
Input voltage DC max.	30 V
Input current max.	40 A

Technical features

Fuse insert	4x G-fuse 5 x 20 mm
Rated fuse current, max.	10 A
LED indication	One per fuse, illuminates when fuse is defective
General fault signal	potential-free semiconductor output
Switching output	18 V-30 V DC/max. 0,1 A
Connector cross section (input)	10 mm ² solid/stranded
Connector cross section (output)	0.14 mm ² -4 mm ² solid, 0.14 mm ² -2.5 mm ² stranded

Dimensions

Depth	68 mm
Width	48 mm
Height	96 mm

TECHNICAL DATA

Connection type	Screw connection
Rail mounting possible	Yes
Operating temperature min.	0 °C...+70 °C
Degree of protection (IP)	IP20
Certificates / Approvals	CE, cULus

Battery temperature sensor



Description	Model	Art. No.	PU
Battery temperature sensor	wipos UPS 20 SENSOR	81.000.6231.0	1

TECHNICAL DATA

Operating temperature min.-max.	-40 °C... 70 °C
NTC resistance at 25 °C	10 kΩ
NTC B coefficient	4000
Connection clamp	2-pin Leoco 2010S friction lock, spacing 2.0 mm
Cable	2 m twin cable