

1

2

3

4

Inner diam. stator = 33.500 min.
Outer diam. rotor = 32.725 max.

1) axial offset operational tolerance

Positive counting direction :
Rotor cw as viewed (cw →)

A

B

C

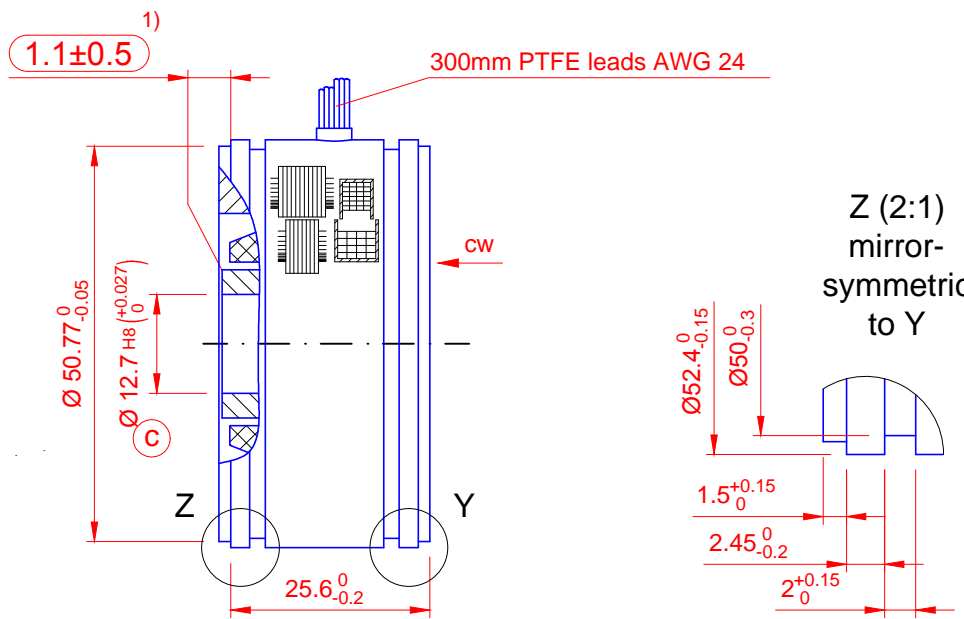
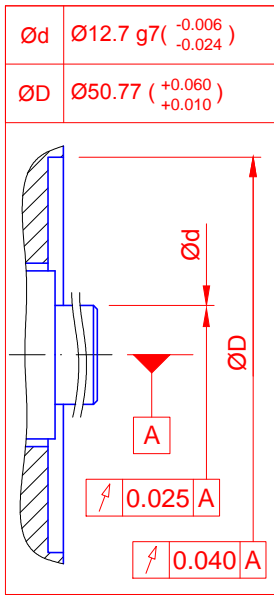
D

E

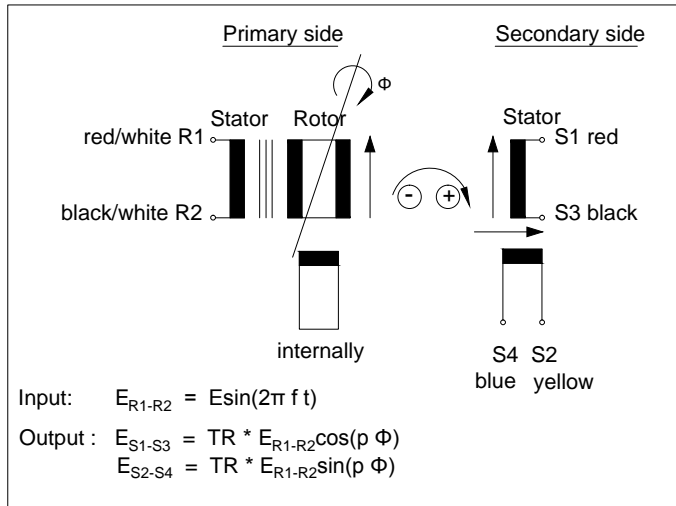
F

Diese technische Unterlage ist unser Eigentum. Wir behalten uns alle Rechte vor. Vervielfältigung, Verwendung oder Mitteilung an Dritte ohne unsere vorherige Zustimmung verpflichtet zu Schadensersatz und kann strafrechtliche Folgen haben.

Requirements to customer assembling interface



Primary side :	R1-R2	R1-R2	R1-R2
Pole pairs p :	1	1	1
Transformation ratio RT :	0.5 ±10%	0.5 ±10%	0.5 ±10%
Input voltage E :	7 V rms	7 V rms	7 V rms
Input current :	typ. 47 mA	typ. 35 mA	typ. 30 mA
Input frequency f :	5kHz	8 kHz	10 kHz
Phase shift :	8° ±3°	-3° ±3°	-8° ±3°
Max. null voltage :	30mV	30mV	30 mV
Impedances :			
Zro [Ω] :	typ. 92 + j 120	typ. 110 + j 170	typ. 122 + j 203
Zrs [Ω] :	typ. 82 + j 100	typ. 95 + j 153	typ. 103 + j 185
Zso [Ω] :	typ. 154 + j 275	typ. 210 + j 387	typ. 245 + j 454
Zss [Ω] :	typ. 140 + j 240	typ. 178 + j 347	typ. 202 + j 415
DC resistance :			
Rotor :	56 Ω ±10% at 20°C		
Stator :	53 Ω ±10% at 20°C		
Accuracy :	±6'		
Accuracy ripple:	1' max.		
Spread :	12'		
Operating temperature :	-55°C ... +155°C		
Max. permissible speed :	20.000 rpm		
Shock (11ms) :	<1000 m/sec ²		
Vibration (55-2000Hz) :	<500 m/sec ²		
Weight rotor :	80g		
Weight stator :	200g		
Rotor moment of inertia :	0.14*10E-4kgm ²		
High pot test voltage housing / winding :	500VAC/50Hz/3sec.		
winding / winding :	250VAC/50Hz/3sec.		
Rotor and stator :	completely impregnated		



h)				Datum	Name
g)			Bearb.	17.11.04	Pielok
f)			Gepr.	17.11.04	Pielok
e)			Norm		
d)					
c)	Diameter correction to 12,7	25.04.16	TZ		
b)	New data sheet layout	12.02.16	MTer		
a)	old description RE-21-1-A05	30.03.15	AY		
Zust.	Änderung	Datum	Name	Dokumenten-N°: 1059431	

Resolver
RE-21-1-A06

Zeichnungs-N°: RE-21-1-A06
 Teile-N°: 5921594

Maßstab
1:1
O-Format
A4h

25.04.16

